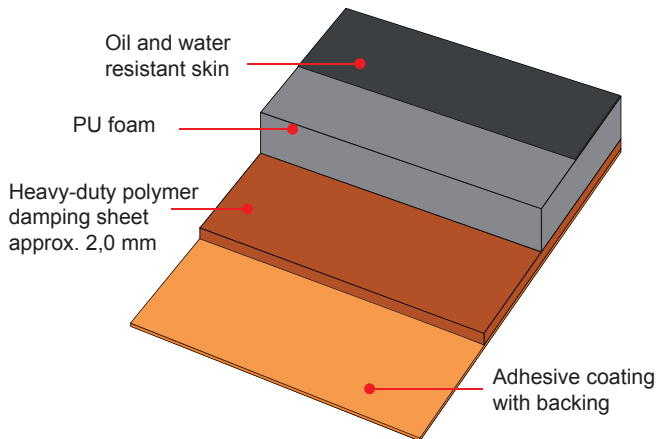
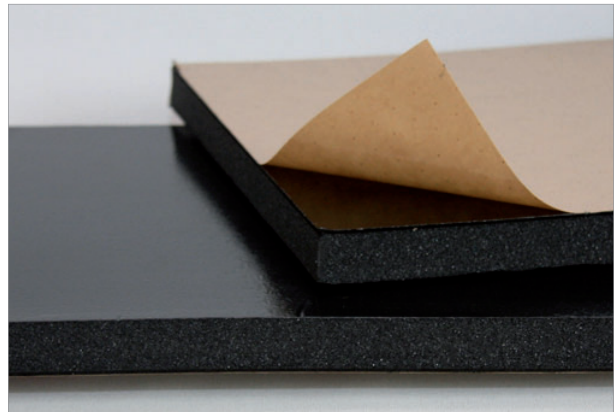


# Da t a s h e e t

### Cross Section



### Close-up



### Applications

Lining of:

- Machine and engine compartments
- Wet cells
- Motor vehicles
- Acoustic booths
- Compressors
- Automatic punching machines

### Attributes

**Dinaphon® M 7815** is ideal for the damping of thin walled sheet metal housings. It also features excellent sound absorption characteristics due to its PU foam layer with PU skin, which is resistant to oil and water.

### Application

Substrates must be dry, oil-free and dust-free when the mats are stuck to the surface. Full surface contact is necessary as is a substrate surface and mat temperature of at least 20° C for the installation to achieve satisfactory results.

Remove the protective backing and firmly press the mat on to the desired surface, eliminating air pockets, e.g. with a roller. The adhesive adheres immediately, but requires several hours to harden completely.

### Storage

Good for 6 months if stored in a dry area at temperatures ranging between 15 - 25° C.

### Technical Data

Product Data	Dinaphon® M 7815
Damping factor at 200 Hz, 20° C on 1 mm steel sheet	0.09
Weight	M 7815/12 approx. 3,0 kg/m <sup>2</sup>
	M 7815/22 approx. 3,3 kg/m <sup>2</sup>
	M 7815/32 approx. 3,6 kg/m <sup>2</sup>
Adhesive strength at 20° C	50 N/cm <sup>2</sup>
Thermal stability:	-20° C / +80° C
Brief	60 min up to 120° C
Suggested temperature at application	20 - 30° C
Combustibility as per MVSS302	SE/B

### Packaging Unit and Form

**Sheet size:** 1480 x 980 mm

**Total thickness:** 12, 22, 32 mm

### Cut to order mats:

Keller will be glad to cut mats to specific size requirements indicated in customer plans or drawing files for both large and small orders. Ask for a price quote.

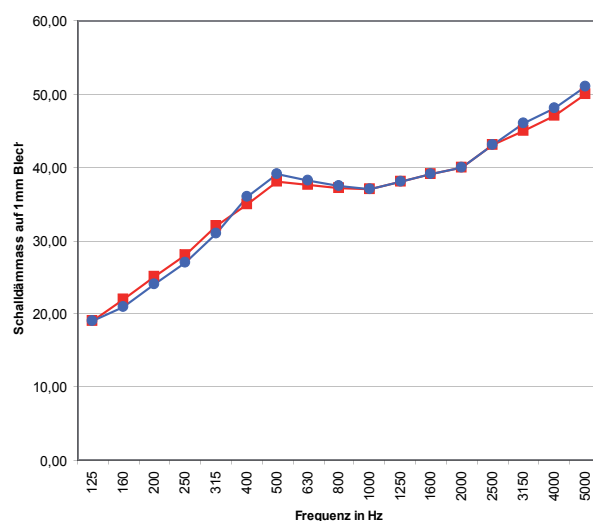
# Dinaphon® M 7815

## Soundproofing Mats

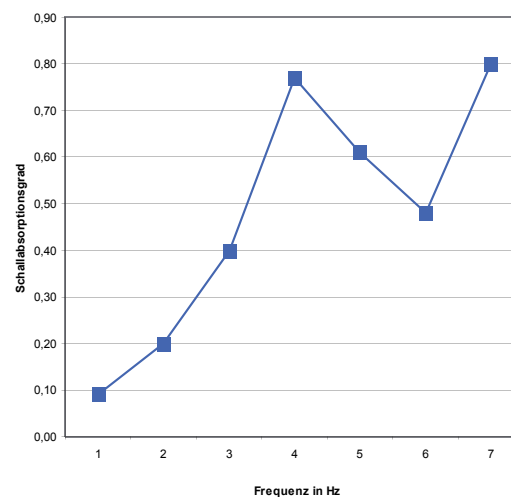
### Sound Absorption

Measurement in small cabin, at 1 mm steel sheet

f.(hz)	Dinaphon M 7815	
	13 mm	23 mm
125	19.00	19.00
160	22.00	21.00
200	25.00	24.00
250	28.00	27.00
315	32.00	31.00
400	35.00	36.00
500	38.00	39.00
630	37.60	38.20
800	37.20	37.50
1000	37.00	37.00
1250	38.00	38.00
1600	39.00	39.00
2000	40.00	40.00
2500	43.00	43.00
3150	45.00	46.00
4000	47.00	48.00
5000	50.00	51.00



f.(hz)	Dinaphon M 7815	
	13 mm	
125	0,09	
250	0,20	
500	0,40	
1000	0,77	
2000	0,61	
4000	0,48	
8000	0,80	



Siegfried Keller AG provides its assistance, application-specific advice and product use instructions to the best of its knowledge and ability. Siegfried Keller AG reserves the right to make the changes to its products and information, which are the result of its constant efforts to improve both the information and products, and shall not be held liable for damages occurring due to the

information or assistance it provides. Moreover, the information provided by Siegfried Keller AG shall not nullify the responsibility of the purchaser of the products to test the suitability of the materials for the intended application, process and purpose prior to using them.