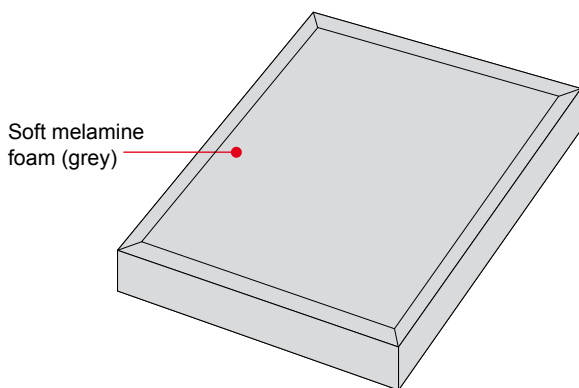


Cross Section



Close-up



Dinaphon® B 600 Neutral 30

Applications

- Office space
- Lounges, day rooms, recreation rooms
- Conference rooms
- Rehearsal rooms
- Factories
- Workshops

Attributes

Dinaphon® B 600 absorption panels install easily with adhesive putty, such as Dinaphon® Z 200, directly to walls and ceilings. The adhesive is applied to the absorption panel surfaces, which must be hard, dry and free of oil. Ambient and material temperature of 18° C or warmer is necessary to attain necessary adhesion.

Melamine foam has different sized pores with a maximum of 10 pores of 5 - 15 mm diameter per square metre. Dimensional deviation of up to 1.5 % in the length and width may occur and is acceptable.

Application

Dinaphon® B 600 panels easily cut to size with a sharp knife.

Storage

Store in a dry area at temperatures ranging between 15 - 25° C.

Technical Data

| Product Data | Dinaphon® B 600 |
|---|------------------------------|
| Bulk density of foam | 8.5 – 11.5 kg/m ³ |
| Thermal stability | - 60 to + 150 °C |
| Fire ratings as per DIN 5510Section 2 | S4, SR2, ST2 |
| Building material rating of foam as per DIN 4102 | B1 |
| BKZ (Swiss fire code rating) | 5.3 |
| Rated thermal conductivity λ (W/m ² K) | 0.035 |

Packaging Unit and Form

Panel size: 600 x 600 mm

Panel thickness: 30 - 65 mm

Product variant designations:

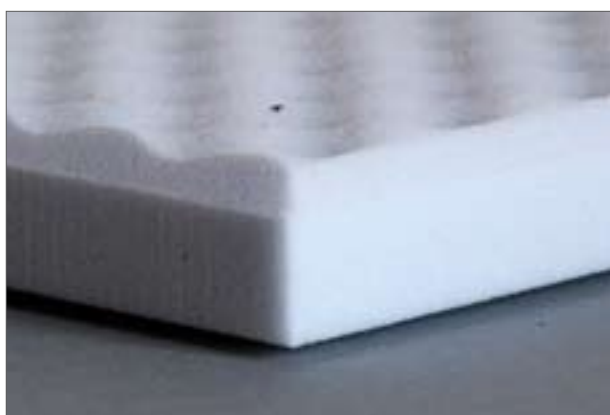
Neutral 30, Classic 30, Cross 30, Double Cross 30, Techno 30, Wave 30, Shadow 40, Pyramid 65

Dinaphon® B 600

Absorption Panels

Data sheet

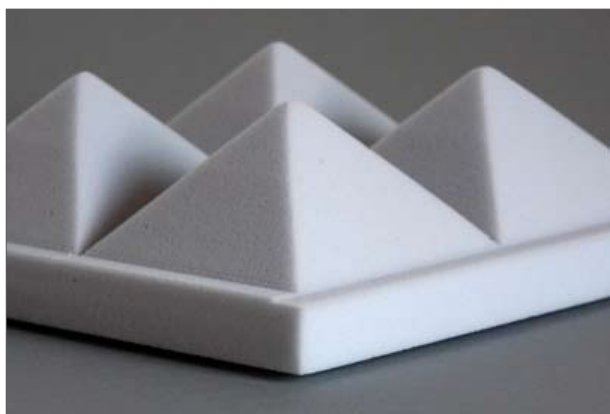
Close-ups



Dinaphon® B 600 Wave 30



Dinaphon® B 600 Double Cross 30



Dinaphon® B 600 Pyramid 65/20

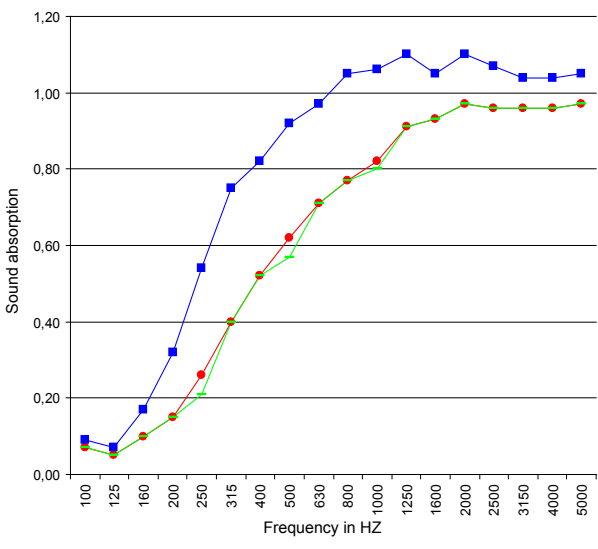


Dinaphon® B 600 Shadow 40

Sound Absorption

Dinaphon® B 600 installed directly on the floor.
Results obtained using the reverberant field testing method for:

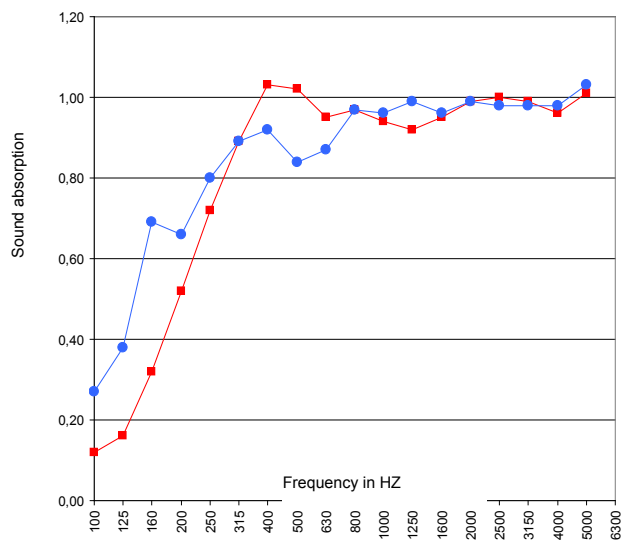
| | Neutral 30 mm | Neutral 50mm | Wave 30mm |
|---------|---------------|--------------|-----------|
| | —●— | —■— | — — |
| 100 Hz | 0.07 | 0.09 | 0.07 |
| 125 Hz | 0.05 | 0.07 | 0.05 |
| 160 Hz | 0.10 | 0.17 | 0.10 |
| 200 Hz | 0.15 | 0.32 | 0.15 |
| 250 Hz | 0.26 | 0.54 | 0.21 |
| 315 Hz | 0.40 | 0.75 | 0.40 |
| 400 Hz | 0.52 | 0.82 | 0.52 |
| 500 Hz | 0.62 | 0.92 | 0.57 |
| 630 Hz | 0.71 | 0.97 | 0.71 |
| 800 Hz | 0.77 | 1.05 | 0.77 |
| 1000 Hz | 0.82 | 1.06 | 0.80 |
| 1250 Hz | 0.91 | 1.10 | 0.91 |
| 1600 Hz | 0.93 | 1.05 | 0.93 |
| 2000 Hz | 0.97 | 1.10 | 0.97 |
| 2500 Hz | 0.96 | 1.07 | 0.96 |
| 3150 Hz | 0.96 | 1.04 | 0.96 |
| 4000 Hz | 0.96 | 1.04 | 0.96 |
| 5000 Hz | 0.97 | 1.05 | 0.97 |



Keller Lärmschutz AG provides its assistance, application-specific advice and product use instructions to the best of its knowledge and ability. Keller Lärmschutz AG reserves the right to make the changes to its products and information, which are the result of its constant efforts to improve both the information and products, and shall not be held liable for damages occurring due to the

Dinaphon® B 600 installed in suspended frame.
Results obtained using the reverberant field testing method:

| Distance from ceiling | 100 mm | 300 mm |
|-----------------------|--------|--------|
| | —■— | —●— |
| 100 Hz | 0.12 | 0.27 |
| 125 Hz | 0.16 | 0.38 |
| 160 Hz | 0.32 | 0.69 |
| 200 Hz | 0.52 | 0.66 |
| 250 Hz | 0.72 | 0.80 |
| 315 Hz | 0.89 | 0.89 |
| 400 Hz | 1.03 | 0.92 |
| 500 Hz | 1.02 | 0.84 |
| 630 Hz | 0.95 | 0.87 |
| 800 Hz | 0.97 | 0.97 |
| 1000 Hz | 0.94 | 0.96 |
| 1250 Hz | 0.92 | 0.99 |
| 1600 Hz | 0.95 | 0.96 |
| 2000 Hz | 0.99 | 0.99 |
| 2500 Hz | 1.00 | 0.98 |
| 3150 Hz | 0.99 | 0.98 |
| 4000 Hz | 0.96 | 0.98 |
| 5000 Hz | 1.01 | 1.03 |



information or assistance it provides. Moreover, the information provided by Keller Lärmschutz AG shall not nullify the responsibility of the purchaser of the products to test the suitability of the materials for the intended application, process and purpose prior to using them.